

PRELIMINARY ISSUE
THIS PLAN ISSUED FOR
ADVANCE INFORMATION ONLY

HUMBOLDT BAY (BAR & ENTRANCE)					
	X	Y	Z PT	X	Y
1	5936596.69	2173163.63	24	5959081.79	2187678.43
2	5938385.39	2172268.83	25	5958421.69	2187381.23
3	5940404.09	2171258.93	26	5958007.99	2186903.83
4	5943665.09	2169944.43	27	5956425.99	2185993.63
5	5944727.49	2168468.93	28	5956165.59	2185194.63
6	5945239.99	2166680.33	29	5955348.69	2184244.83
7	5945752.39	2164911.73	30	5954506.99	2183383.43
8	5946464.09	2163133.33	31	5953653.09	2182464.63
9	5946953.59	2161479.53	32	5952800.39	2181543.53
10	5947631.59	2159842.13	33	5951916.79	2180624.53
11	5948193.09	2158179.33	34	5951026.69	2179724.13
12	5949124.59	2156527.03	35	5949343.09	2178823.13
13	5950308.09	2154879.13	36	5948674.19	2177922.13
14	5951144.79	2153253.23	37	5948014.49	2177021.13
15	5951978.39	2151648.23	38	5947358.59	2176120.13
16	5952816.79	2149958.43	39	5946707.49	2175219.13
17	5953654.79	2148270.43	40	5946051.39	2174318.13
18	5954504.79	2146582.43	41	5945392.89	2173417.13
19	5955354.79	2144894.43	42	5944738.09	2172516.13
20	5956204.79	2143206.43	43	5944083.09	2171615.13
21	5957054.79	2141518.43	44	5943424.19	2170714.13
22	5957904.79	2139830.43	45	5942769.43	2169813.13
23	5958754.79	2138142.43	46	5942114.43	2168912.13
24	5959604.79	2136454.43	47	5941459.43	2168011.13
25	5960454.79	2134766.43			
26	5961304.79	2133078.43			
27	5962154.79	2131390.43			
28	5963004.79	2129702.43			
29	5963854.79	2128014.43			
30	5964704.79	2126326.43			
31	5965554.79	2124638.43			
32	5966404.79	2122950.43			
33	5967254.79	2121262.43			
34	5968104.79	2119574.43			
35	5968954.79	2117886.43			
36	5969804.79	2116198.43			
37	5970654.79	2114510.43			
38	5971504.79	2112822.43			
39	5972354.79	2111134.43			
40	5973204.79	2109446.43			
41	5974054.79	2107758.43			
42	5974904.79	2106070.43			
43	5975754.79	2104382.43			
44	5976604.79	2102694.43			
45	5977454.79	2101006.43			
46	5978304.79	2099318.43			
47	5979154.79	2097630.43			

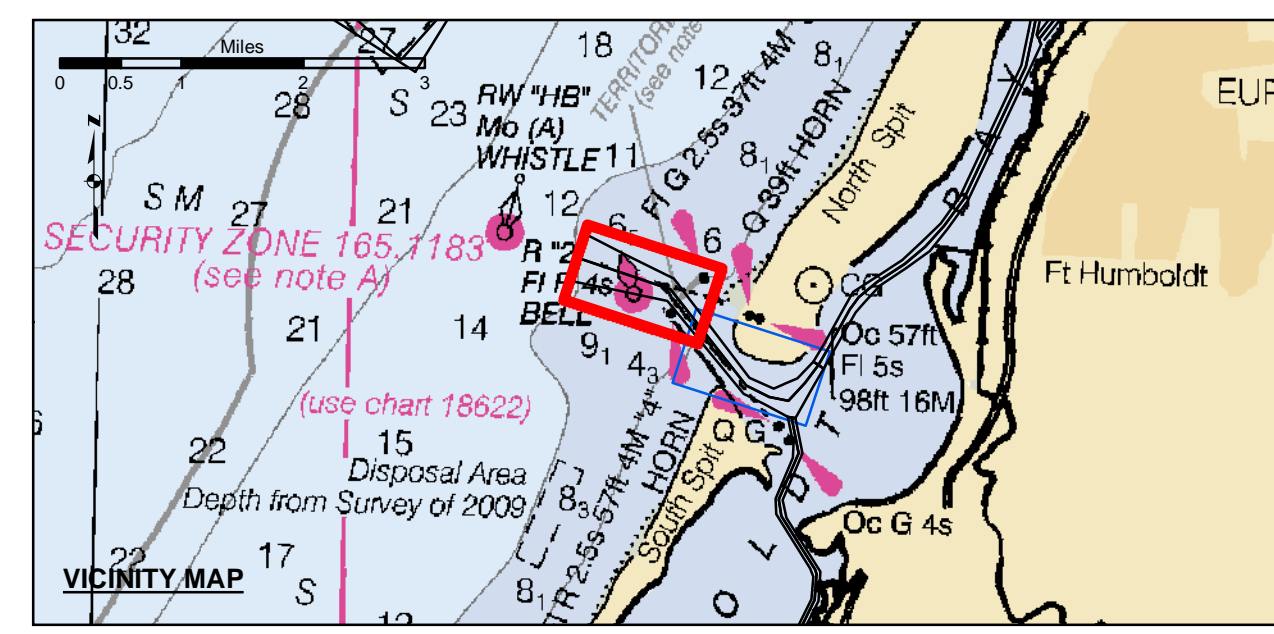
US Army Corps of Engineers
San Francisco District
450 Golden Gate Ave
San Francisco, CA 94102

DISCLAIMER
The United States Government makes no warranty, expressed or implied, concerning the accuracy, completeness, or reliability of the data herein. The user is responsible for the results of any application of the data for other than the intended purpose. The user is responsible for the results of any application of the data for other than the intended purpose. The user is responsible for the results of any application of the data for other than the intended purpose.

Prepared Under the Direction of	Surveyed By	Chart Date
TIMOTHY W. SHEBESTA	Jan 22, 2024	
Submitted By	Plotted By	Designed By
Hydro Survey Team Leader	PDT	
Recommended By	Checked By	Drawn by
Chief, Hydro Survey Section	PDT	PDT
Approved By	Chief, Construction Branch	

CALIFORNIA
HUMBOLDT COUNTY
**HUMBOLDT BAY
& ENTRANCE CHANNEL
CONDITION SURVEY**
12-15 JANUARY 2024

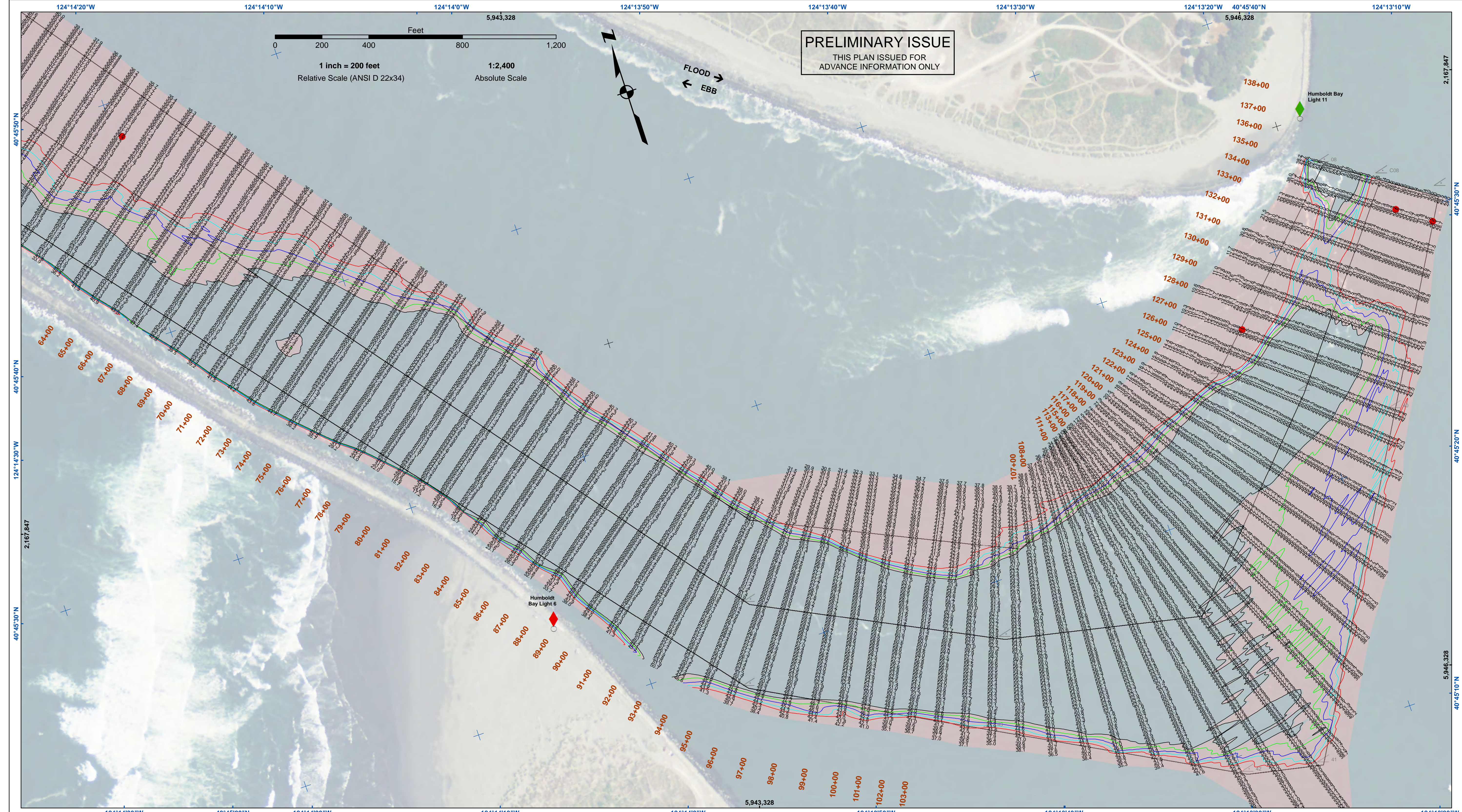
**Sheet
Number
1 of 2**



Federal Navigation Channel	Beacon, General	Contours
Shoaling Area	Obstruction Point	-48
Placement Area	Navigation Buoy	-47
Anchorage Area	Navigation Buoy	-46
Wreck Area	Shoalest Sounding*	-45
Submerged Wreck		-44
Zone_I_Angle_Points		

NOTES:
DRAWINGS NOT TO BE USED AS NAVIGATION. ONLY CHANNEL CONDITION AT DATE OF SURVEY. THE LOCATION OF ALL NAVIGATION AIDS ARE BASED ON INFORMATION PROVIDED BY THE U.S. COAST GUARD. BUOY LOCATION REPRESENT THE POSITION OF THE SINKER ONLY.
SURVEYED BY THE CORPS OF ENGINEERS.
SOUNDING FOR THE CHANNEL MEASURED WITH MULTIBEAM ECHOSOUNDER AND ARE SHOWN TO THE NEAREST TENTH FOOT.
SOUNDINGS ARE BASED ON THE DATUM OF MEAN LOWER LOW WATER AT THE LOCALITY.
PLANE GRID AND COORDINATES ARE BASED ON THE STATE OF CALIFORNIA COORDINATE SYSTEM, LAMBERT CONFORMAL PROJECTION, ZONE 12N, CALIFORNIA, AS DESCRIBED IN SPECIAL PUBLICATION NO. 235, PUBLISHED BY THE NATIONAL OCEANIC AND ATMOSPHERIC ADMINISTRATION, U.S. DEPARTMENT OF COMMERCE.
PROJECT DEPTHS ARE AS FOLLOWS:
BAR & ENTRANCE CHANNEL = 48 FEET
NORTH BAY, SAMOIA TO MILE 5.0 & = 38 FEET
EUREKA CHANNEL, FIELDS LANDING CHANNEL & MILE 5.0 TO "N" STREET = 26 FEET

1:00 INDICATES THE NUMBER AND BEGINNING OF A LINE OF SOUNDINGS.
SOUNDINGS ARE BASED ON TIDE GAUGES REFERENCED TO U.S.C. & G.S.
Vertical and Horizontal Control:
NOAA Station: 941 8767 - North Spit, CA
Benchmark:
NO 11 1940 (PID: LV0359)
MLLW Elev: 4.251m
Title:
RTK GPS, using GEOID12a and VDATUM
RTK elevations calibrated at 10.0ft nail at Coast Guard Station Humboldt Bay
Position:
RTK Positions



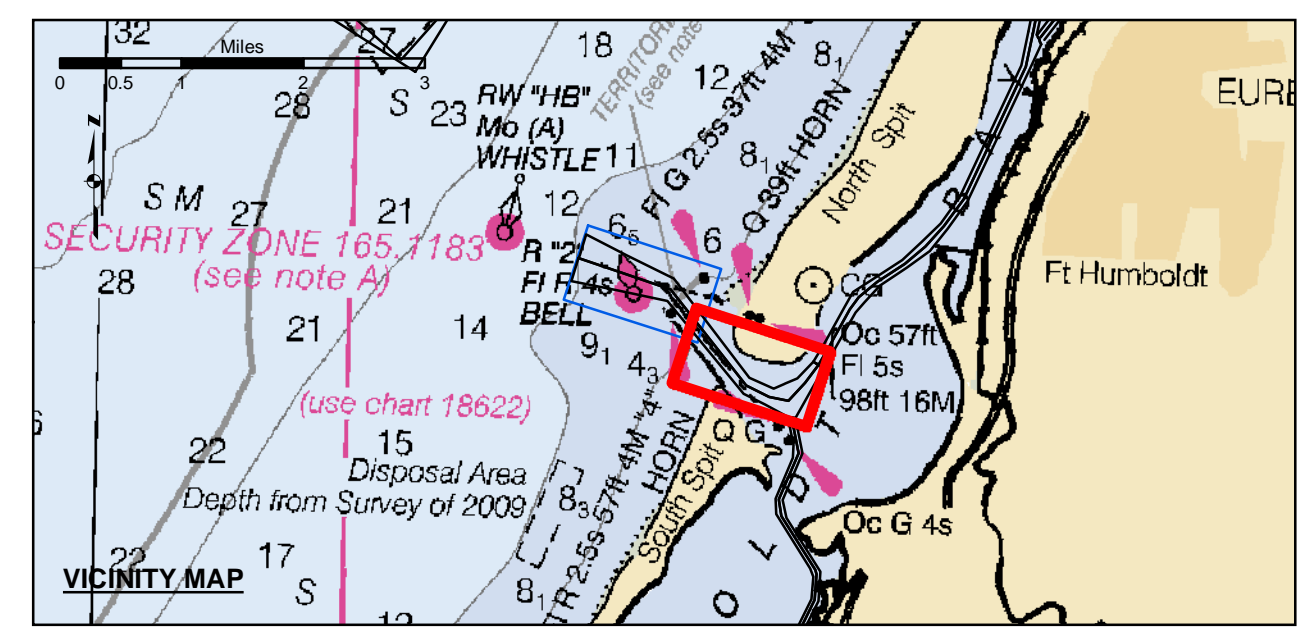
PRELIMINARY ISSUE
THIS PLAN ISSUED FOR
ADVANCE INFORMATION ONLY

Feet
0 200 400 800 1,200
1 inch = 200 feet
Relative Scale (ANSI D 22x34)
5,943,328
1:2,400
Absolute Scale

US Army Corps of Engineers
San Francisco District
450 Golden Gate Ave
San Francisco, CA 94102

DISCLAIMER
The United States Government furnishes this information as a service to the public and does not warrant, express or implied, the accuracy, completeness, or reliability of the information. The user is responsible for the results of any application of the data for other than its intended purpose. The user is responsible for the results of any application of the data for other than its intended purpose. These data belong to the Government. Therefore the user is not to disseminate or transfer these data to others without also transferring this Disclaimer.

Prepared Under the Direction of	Chart Date:
LT COLONEL W. SHEBESTA	Jan 22, 2024
Subject:	Designed by:
Hydro Survey Team Leader	PDT
Recommended:	Checked by:
Chief, Hydro Survey Section	PDT
Approved:	Drawn by:
Chief, Construction Branch	PDT



Federal Navigation Channel	Beacon, General	Contours
Shoaling Area	Obstruction Point	-48
Placement Area	Navigation Buoy	-47
Anchorage Area	Navigation Buoy	-46
Wreck Area	Shoalest Sounding*	-45
Submerged Wreck		-44
Zone_I_Angle_Points		

NOTES:
DRAWINGS NOT TO BE USED AS NAVIGATION. ONLY CHANNEL CONDITION AT DATE OF SURVEY. THE LOCATION OF ALL NAVIGATION AIDS ARE BASED ON INFORMATION PROVIDED BY THE U.S. COAST GUARD. BUOY LOCATION REPRESENT THE POSITION OF THE SINKER ONLY.
SURVEYED BY THE CORPS OF ENGINEERS.
SOUNDING FOR THE CHANNEL MEASURED WITH MULTIBEAM ECHOSOUNDER AND ARE SHOWN TO THE NEAREST TENTH FOOT.
SOUNDINGS ARE BASED ON THE DATUM OF MEAN LOWER LOW WATER AT THE LOCALITY.
PLANE GRID AND COORDINATES ARE BASED ON THE STATE OF CALIFORNIA COORDINATE SYSTEM, LAMBERT CONFORMAL PROJECTION, ZONE 14N, CALIFORNIA, AS DESCRIBED IN SPECIAL PUBLICATION NO. 235, PUBLISHED BY THE NATIONAL OCEANIC AND ATMOSPHERIC ADMINISTRATION, U.S. DEPARTMENT OF COMMERCE.
PROJECT DEPTHS ARE AS FOLLOWS:
BAR & ENTRANCE CHANNEL = 48 FEET
NORTH BAY, SAMOA TO MILE 5.0 & = 38 FEET
EUREKA CHANNEL, FIELDS LANDING CHANNEL & MILE 5.0 TO "N" STREET = 26 FEET

1:00 INDICATES THE NUMBER AND BEGINNING OF A LINE OF SOUNDINGS.
SOUNDINGS ARE BASED ON TIDE GAUGES REFERENCED TO U.S.C. & G.S.
Vertical and Horizontal Control:
NOAA Station: 941 8767 - North Spit, CA
Benchmark:
NO 11 1940 (PID: LV0359)
MLLW Elev: 4.251m
Tides:
RTK GPS, using GEIOD12a and VDATUM
RTK elevations calibrated at 10.0ft nail at Coast Guard Station Humboldt Bay
Position:
RTK Positions

CALIFORNIA
HUMBOLDT COUNTY
**HUMBOLDT BAY
BAR & ENTRANCE CHANNEL
CONDITION SURVEY**
12-15 JANUARY 2024

**Sheet
Number
2 of 2**